



# GULF DEVELOPMENT

## CONTRACTING CORPORATION



**“ We are specialists..**  
in construction , civil architectural  
and Electromechanical works. ”





# **GULF DEVELOPMENT CONSTRUCTION COMPANY**

We strive to be the best in construction field,  
We are always excellent in our work.



# TABLE OF CONTENTS

• WELCOME TO OUR COMPANY	3	• CORE ACTIVITIES	16-17
• MESSAGE FROM CHAIRMAN	4	• OUR PROJECTS	18
• MESSAGE FROM CEO	5	• DESIGN OF MULTI-STORY FACTORIES	20
• ABOUT US	6-7	• SULAIMAN AL HABIB HOSPITAL	22
• INTRODUCTION	8	• DAR AFIA HEALTHCARE CENTER	24
• OUR VALUES TARGET QUALITY	9	• MAI AL JABER CENTER	26
• SAFETY POLICY	10-12	• SINJAR IRAQ RESTAURANT	28
• DEVELOPMENTS	13		
• OUR SERVICES	14		
• OUR TEAM	15		



“

**WE BUILD  
THE GULF FUTURE,**

**WELCOME TO GCC CO.**

Welcome to GCC Contracting Co, it is our pleasure to introduce you to our firm, In a very short time, GCC Contracting Co has experienced unprecedented growth in ksa construction sector.







# MESSAGE FROM CHAIRMAN

**WE ARE ALL PROUD OF OUR COMPANY,**

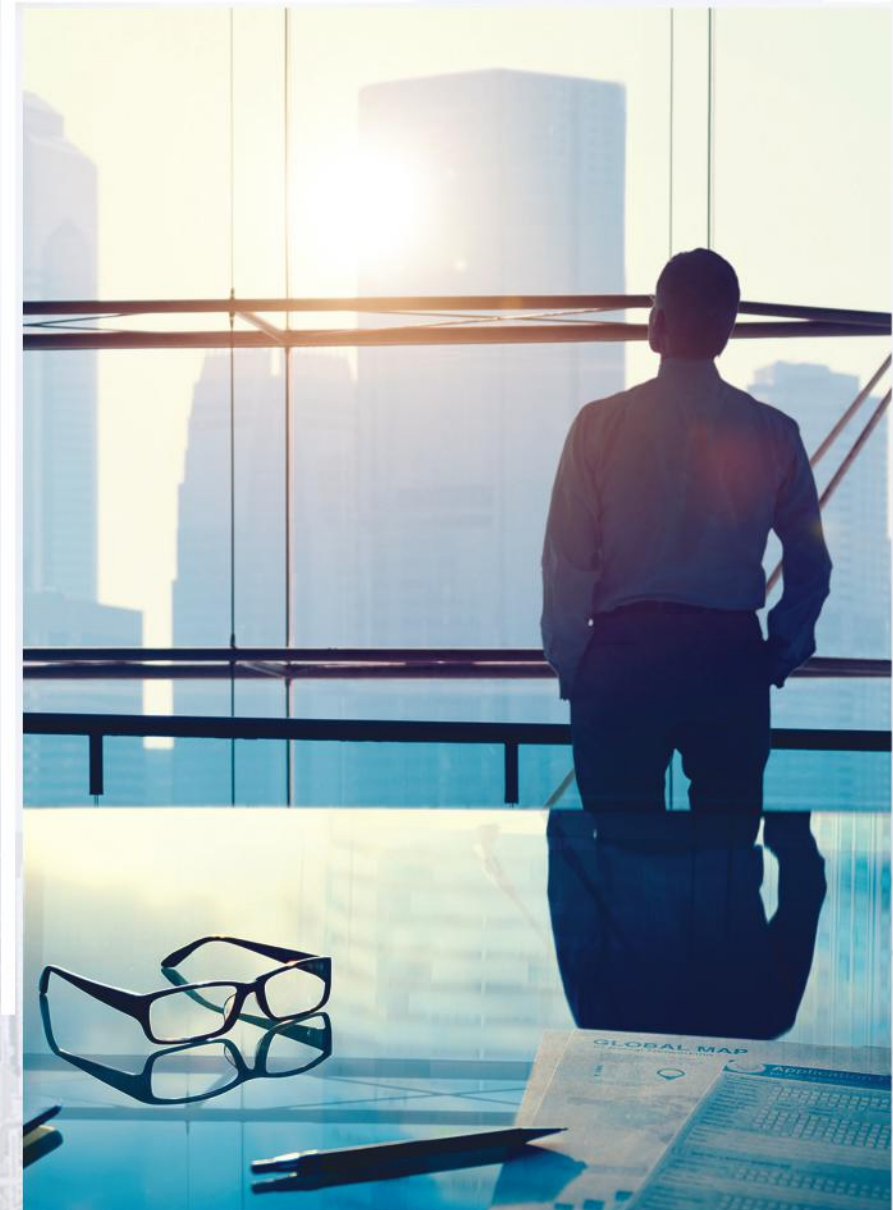
I believe in its professional management team and trust that they will continue to grow very fast in the KSA Construction Sector.

With a rich pool of talent from top quality engineering, procurement and construction services, the highly qualified team is exceeding their customer expectations by dealing in a fair, equitable and professional manner.

I assure you from my personal experience on executed projects for my group companies that the team is experienced and will deliver your projects on time, the first time, and every time.

GCC CHAIRMAN,

A stylized, handwritten signature in black ink, appearing to read 'J. Al-Zahrani'.



# MESSAGE FROM CEO



## THE CUSTOMER SATISFACTION IS OUR GOAL,

Happiness does not come from doing easy work but from the after-glow of satisfaction that comes after the achievement of a difficult task that demanded.

The most importantly is to ensure satisfied clients success comes from a relentless focus on innovation and execution, this belief is implemented from the top down.

Not only do we encourage innovation within the company, but also innovation with sustainability, This means doing things better and smarter.

Empowering our engineers and staff to do what they do best for the perfect end result for our clients.

---

CEO OF GCC CO.,



To achieve glory..

I believe that hard work and dedication is key to the success of the projects.







## ABOUT GCC CO.

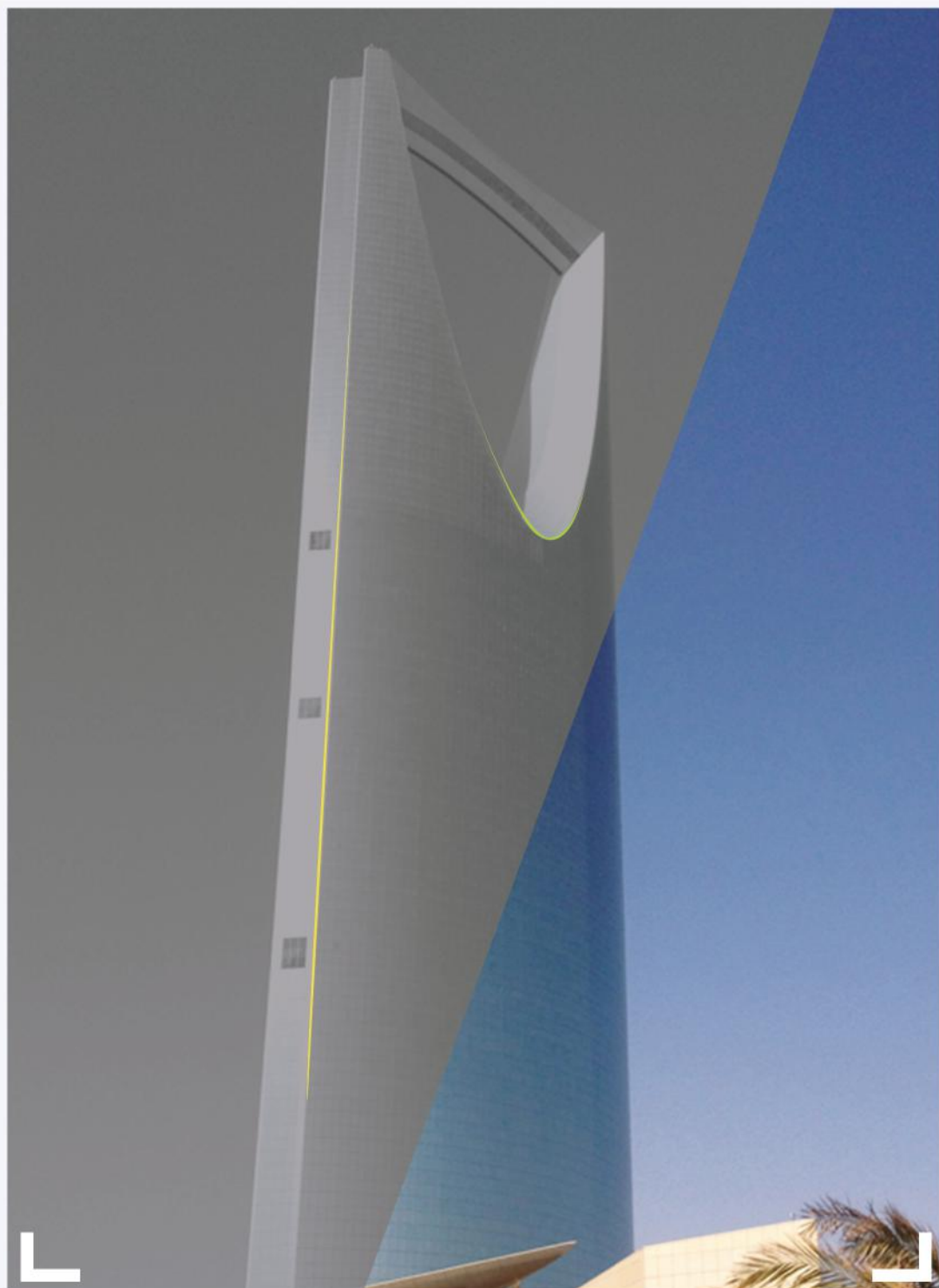
### ABOUT THE GCC TEAM AND HOW THEY WORK,

We would like to introduce ourselves as specialists in construction, civil architectural and Electromechanical works in ksa construction sector and we plan to achieve this worldwide.

Our management always tries to maintain its is current and future client by giving them all the required solutions and associated services from initial enquiries up to final completion.

GCC CO. is driven by skilled and dedicated professional personnels who hold extensive experience and precise collective and understanding for the constructing process for various types of projects.

Besides all the above we always seek to follow all kinds of Developments concerning materials, machines and equipment, which eventually can produce the highest quality of work.





## OUR VISION

### TO BE A PREMIER ENGINEERING,

We strive to exceed the expectations of all stakeholders, fulfilling all their requirements with the utmost quality and excellence.

- To become a leader in building and servicing the gulf's rapidly growing industrial, commercial and residential construction sector
- To take construction to another level by implementing innovative ideas technologies within company.

## OUR MISSION

### WE STRIVE TO BE AMONGST THE BEST,

Our mission is to deliver construction projects based on clients' needs using world-class standards Services, on time, first time, all the time,

- Our commitment to providing a stimulating environment for our multi-cultural staff gives them the ability to learn and grow, pursue excellence through innovation, and differentiation.
- We pledge to adopt an entrepreneurial approach to project execution and creating a convenient experience.





# INTRODUCTION

Gulf Contracting Company (GCC) started its operation in the Kingdom of Saudi Arabia as a General Contracting,

Within a short span of time **Gulf Contracting Company (GCC)** has become a competitive and key player in the field of General Contracting & Project Management especially in the Eastern province of the Kingdom of Saudi Arabia.

**Gulf Contracting Company (GCC)** is a nationally-oriented general contracting company focusing primarily on engineering, construction, infrastructure, and property development.

**(GCC)** provides turnkey construction and project management services using proven technologies, systems, and work processes to provide optimal results for clients.

**(GCC)** guarantees to deliver even the most complex and challenging construction projects on time and within the given budget.

Its local network of construction resources facilitates the effective mobilization of skilled construction teams and advanced methodologies around KSA.

**(GCC)** professional management team has extensive experience with local considerations and managing culturally diverse workforces.



**Gulf Contracting Company (GCC)** believes in..  
“Customer satisfaction with Zero tolerance to quality,  
perfection and time management.”





## OUR VALUES TARGET QUALITY

Gulf Development Corporation Contracting ( GCC ) seeks to provide their customers with “best in class” products and services and will deliver excellence time after time, (GCC) strives for continuous improvement and responds vigorously to change – true value with no compromise.

( GCC ) have Achieved the Accreditation of ISO 9001, 14001, and ARAMCO Vendor on September 2021 by Maintaining the Quality Punctuality and Standards within the organization and Providing the same to its Valuable Clients.

- **FAIRNESS,**
- **INTEGRITY,**
- **Business Ethics,**
- **CUSTOMER SATISFACTION,**
- **INNOVATION, SPEED AND EXECUTION,**
- **HUMILITY AND WILLINGNESS TO IMPROVE,**
- **EXCELLENT CORPORATE GOVERNANCE PRACTICE,**





# SAFETY POLICY

All Personnel Engaged With Us Have Undergone A Special Safety program Devised In-house On Practices Applicable.

In Sub-station power Plants And Work On Overhead Transmission Lines Ect.

The safety Program Included But Not Limited To Detailed Practical Training On Safety Procedures.

That Need To Be Employed On construction Activities Specifically Relevant To Electrical Equipment.

The Program Was Designed To Be A Refresher Course In Safe typrocedures That Needed To Be Adopted Like Erection Of Safety barriers, Scaffolding, Barricades, Warning Signs Ect,



our staffs are already trained to strictly adhere to procedures and specifically avoid all practices and procedures that are likely to cause injury and or damage to personnel, material, equipment.

A periodic on site review is carried out by our safety engineer to ensure that:

- A. The staffs are kept abreast with contemporary safety practices and procedures in all aspects of work.
- B. The staffs are continuously and adequately exposed to critical safety aspects related to their task.
- C. The company 's safety drill is continuously enhanced.
- D. Steps can be taken well in advance to prevent a situation that may arise out of insufficient knowledge and that lack of knowledge does not constitute a cause for breach of safety procedures.

Our safety engineer carryout weekly review of the procedures being adopted.





## GENERAL POLICY

The company recognizes that all accidents especially those resulting in personal injury to people or damage to property, must be reduced to an absolute minimum.

in this policy statement, safety and accident prevention is defined as Prevention of personal injury to employees and others affected by the company's activities.

1. Control of work to ensure that no damage is caused to property whether company owned or otherwise and to eliminate fire risks.
2. Investigation of accidents to establish causes and subsequent control required preventing recurrence.

## RESPONSIBILITIES

Every employee has a personal responsibility for the safe conduct of his work and in particular.

1. The manager or person in charge of any group has overall responsibility for the safe working of those under his charge.
2. Any employee seeing or becoming aware of a potentially hazardous situation has a duty to take action to bring it to the attention of management.



## WORK PREPARATION

Make sure you have company authority to use machinery and power tools:

1. Wear sensible clothing and footwear.
2. Wear the safety helmet at all times.
3. Wear gloves when necessary in handling materials.
4. Check materials handle them carefully and stack them correctly.
5. Make sure you maintain the safety equipment in good condition.



## PERSONAL PROTECTION

**Head:** You would be issued with a safety helmet. Ensure you wear it at all times when working on site.

**Legs:** Use the right type of comfortable and protector safety shoes.

**Skin:** Materials like acid and corrosives can harm the skin, Some risks include paints, mineral oils, chemical materials.

**Lugs:** Be careful not to inhale dust and fumes, as they are harmful, and when masks are provided, this means that there is a real danger.

**Hands:** Don't wear rings on your fingers when working on site, Wear Special gloves when handling rough or sharp materials.

**Eyes:** Wherever there is risk of eye injury, wear proper eye protection.

**Mouth:** Do not eat, drink or smoke if your hands are either dirty or contaminated with substances, which will be harmful.

**Ears:** Exposure to loud noise can damage hearing. If you have to work with a noisy machine, you should use a suitable hearing protection.

## INDUSTRIAL LOCATIONS

- If you are working within or around factories, refineries, chemical works or other industrial sites ask your supervisor if there are any special instructions.
- Steamlines or other pipes carrying hot or cold substances may not always be provided with insulation in areas where you are required to work and there can cause quite severe burns if in doubt check with plant supervisor.
- Moving machinery, conveyors, trains, trucks and plant can cause accidents if due care is not taken.
- Welding can cause eye injuries either from intensity of light or from sparks.
- Watch for things, which may be less familiar to you.
- Fuel lines, particularly in refineries, can easily be damaged by carelessly handling scaffolding equipment and dropped fittings.
- If you are working near any welding site, you may need to wear protective goggles which will be provided.
- Chemicals, liquid or dry, in vats, tanks or other storage containers, may also require wearing of protective clothes.



# GDCC DEVELOPMENTS

We introduce to you all types of integrated construction developments,

RESIDENTIAL COMMERCIAL  
COMPLEXES.

WATER DISTRIBUTION  
NETWORKS.

LEISURE FACILITIES.

WATER TRUCK MAINS.

HOSPITAL/CLINICS.

OFFICES/HOLES.

ROOD WORKS.

SHOWROOMS.

TOWERS.

DRAINAGE AND SEWERAGE  
TRUNK MAINS.

DRAINAGE AND SEWERAGE  
NETWORKS.

MIXED USED DEVELOPMENTS.

ELECTRICAL SUBSTATIONS.

DESALINATION PLANTS.

TREATMENT PLANTS.

POWER STATIONS.

PUMPING STATIONS.

CODLING PLANS.





# WHAT WE DO?

## CONTRACTING & PROJECT MANAGEMENT

- FULL SITE SURVEYS.
- JOB PROCUREMENT.
- QUALIFIED WORK FORCE.
- JOB COSTING.
- ENVIRONMENT FRIENDLY.
- JOB EXECUTION.
- JOB QUALITY CONTROL.
- JOB PLANNING.
- SAFETY AND RISK ASSESSMENT.

## ENGINEERING SERVICES

- ARCHITECTS.
- CIVIL ENGINEERS.
- INTERIOR DESIGNERS.
- ELECTRICAL ENGINEERS.
- DRAUGHTS MEN.
- MECHANICAL ENGINEERS.

## **PROJECT MANAGEMENT TEAM**

The Project Management Team consists of highly experienced personnel, including the managing director, projects director, operations manager, administration, and financial manager who continuously back up the estimation, execution, and procurement team to achieve their commitments to various clients as well on their quality management level of performance during the whole duration of the project execution.

## **EXECUTION TEAM**

GDCC has an experienced estimation department to ensure each client receives the most competitive rates for their offered services among the local market, with the best quality products output within a critical time of execution.

## **MAN POWER TEAM**

We works in unison with competent and professional staff to meet today's demanding criteria for Safety, Quality, and Schedule. This includes more than 300 highly skilled surveyors, carpenters, steel fixers, painters, electricians, plumbers, pipe fitters, duct men, welders, etc.



## **ESTIMATION TEAM**

With the supervision of our experienced project managers, site engineers, supervisors, surveyors, and team leaders, our skilled carpenters, masons, steel fixers, electricians, duct men, plumbers, welders, painters.

We Offer technical staff work hand in hand to execute the project with a sole target is to produce outstanding outputs that makes clients at ease at all times.

## **PROCUREMENT TEAM**

We purchase experts make sure their clients only receive quality products at the best rates in the market.



# CORE ACTIVITIES

The main core activities of GDC Contracting Company in the field of construction and contracting resulting from the long experience in this field are as listed here,

## A) EARTH WORK:

- Excavation.
- Backfilling.
- Soil Improvement.
- Compaction in Layers to reach the Design MDD.

## B) DEWATERING WORK:

- Sump Method.
- Well Point Method.
- Deep Well Method.

## C) SHORING WORK:

- Installation of locked type sheet piling system complete.
- Supply of bored cast in situ foundation piles, secant and piles.
- Installation of steel beams and wood strutting.

## D) REINFORCED CONCRETE WORK:

(For residential & commercial buildings, cooling plants, hotels, resorts, pumping stations, substations, water tanks, desalination plants, power stations and sewage treatment plants).

- RCC Foundations (Isolated, Combined, Strip, Raft).
- RCC Tie Beams & Columns.
- RCC Drop, hidden, and inverted beams.
- RCC Ribbed & Solid Slabs (one way and two way).
- RCC Manholes & RCC Culverts.
- RCC Slabs on grade.
- RCC bored cast in situ foundation piles.
- RCC bored cast in situ secant and contiguous piles.
- Prestressed Hollow Core Slabs.
- Cast in Situ Post Tension Slabs.



## **E) ELECTRICAL WORK:**

(Complete with, termination, testing & commissioning),  
Supply & Installation of:

- Electrical Conduits for internal & external to wires & underground cables respectively.
- Indoor electrical wires & external underground cables.
- Cable trays.
- Main and sub-main panel boards.
- All types of light fixtures.
- Earthing system (Supply & Installation of lightning protection)
- Lightning protection.
- Power outlets and switches.
- External street light poles.
- Laying of LV, MV, &HV Cables.
- Switchgears & Transformers.

## **F) EARTH WORK:**

Including smoke & heat detectors, wiring, fire alarm panel, and manual call point, etc, including testing and commissioning complete.

## **G) TELEPHONE & DATA SYSTEM:**

Telephone & data system including cabling, face plates, wiring, termination, testing, and commissioning complete.

## **H) CCTV SYSTEM:**

CCTV wiring, cameras, VCR and all other related apparatuses, termination, testing, and commissioning complete.

## **I) PAGING SYSTEM:**

complete paging/ public address system comprising of wiring, speakers, amplifiers, microphones, racks, etc, including termination testing and commissioning complete.

## **J) MECHANICAL WORK:**

MEP Works for residential and commercial buildings, hotels, towers, complexes, and resorts. HVAC work ranging from.

- Chilled water system.
- Package units ducting system.
- Package units ducting system.
- Ducted split units.
- Erection of steel welded tanks.
- Erection of steel structures.
- Erection of steel platforms.
- Process piping systems.

## **K) INFRASTRUCTURAL WORK:**

(All work comprises pipes, fittings, accessories):

- Supply & Laying of water distribution network and water trunk mains.
- Supply & Laying telephone and electrical sleeves and duct banks.
- Supply & Laying of drainage distribution networks and trunk main.
- Supply & Laying of sewage distribution networks and trunk main.









**GCC PROJECTS**  
**COMMERCIAL & MEDICAL**





## DESIGN OF MULTI-STORY FACTORIES, (BUILDINGS),- MODON ( 1ST INDUSTRIAL DAMMAM )

2023/2024



**LOCATION: AL DAMMAM, KSA**

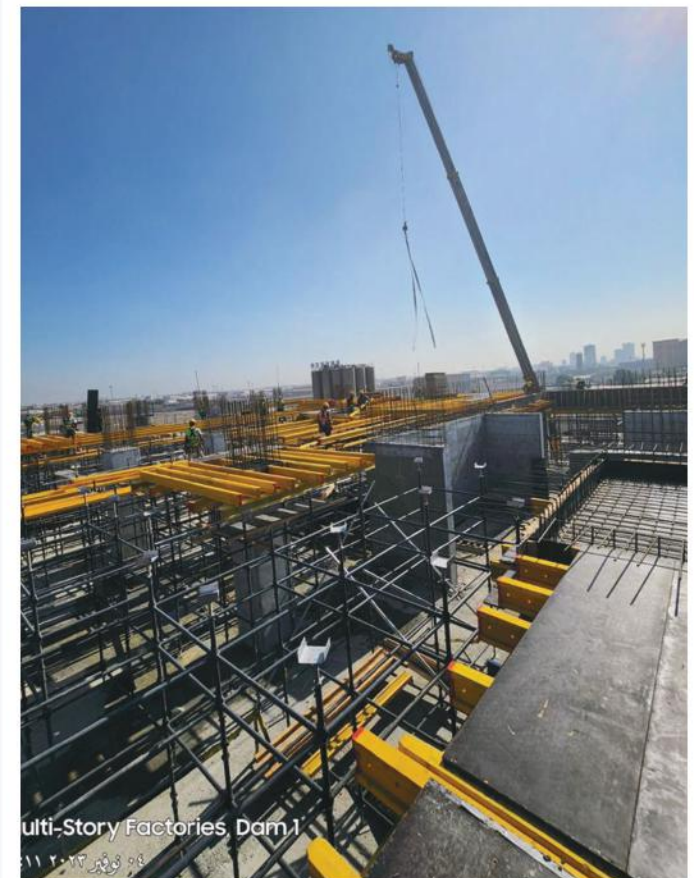
**CATEGORY: ELCTROMECHANICAL INSTALLTION**

Scope of work all MEP work :

- HVAC ( VRV SYSTEM )    - Firw fighting & fire alarm
- FM 200 System                - All Plumber work











# SULAIMAN AL HABIB HOSPITAL

2021/2022



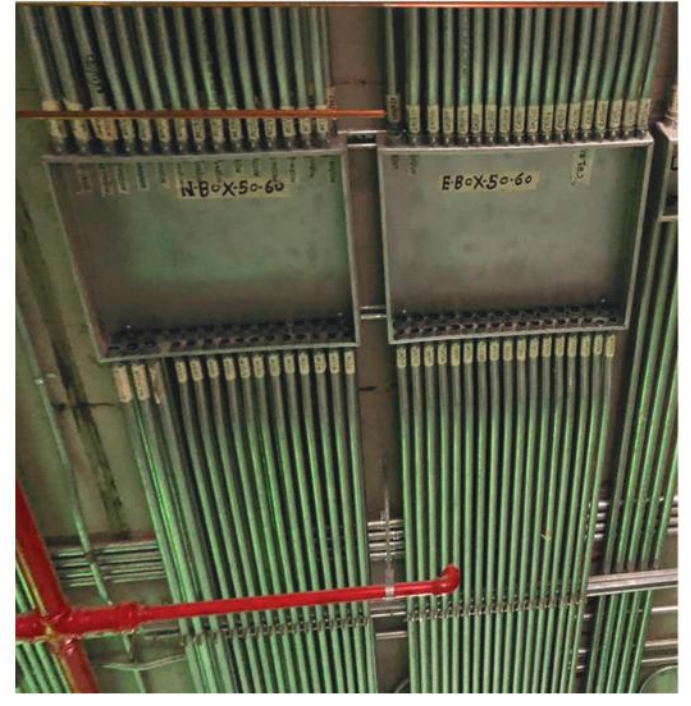
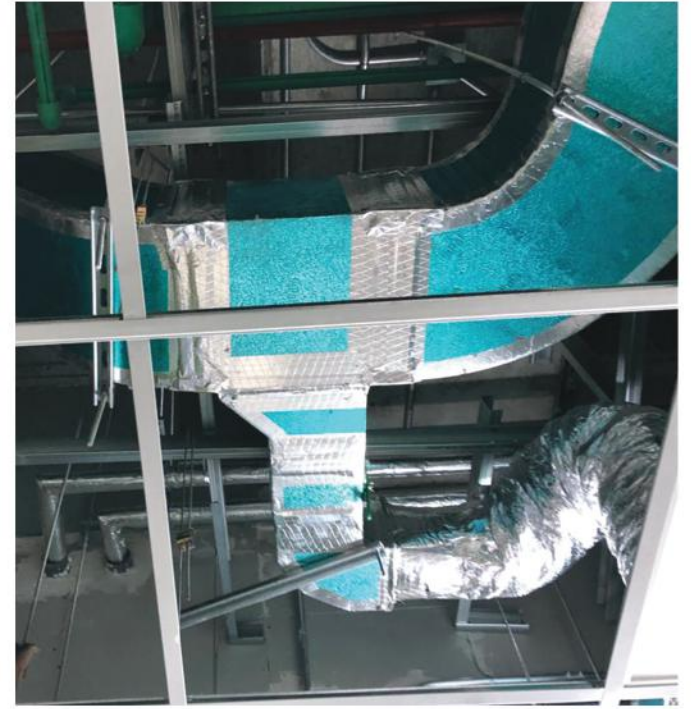
**LOCATION:** AL KHOBAR, KSA

**CATEGORY:** ELCTROMECHANICAL

Install transformers & R.M.U for all electrical systems,  
( Lighting - Power - Earthing - Low Current Systems )











## DAR AFIA HEALTHCARE CENTER

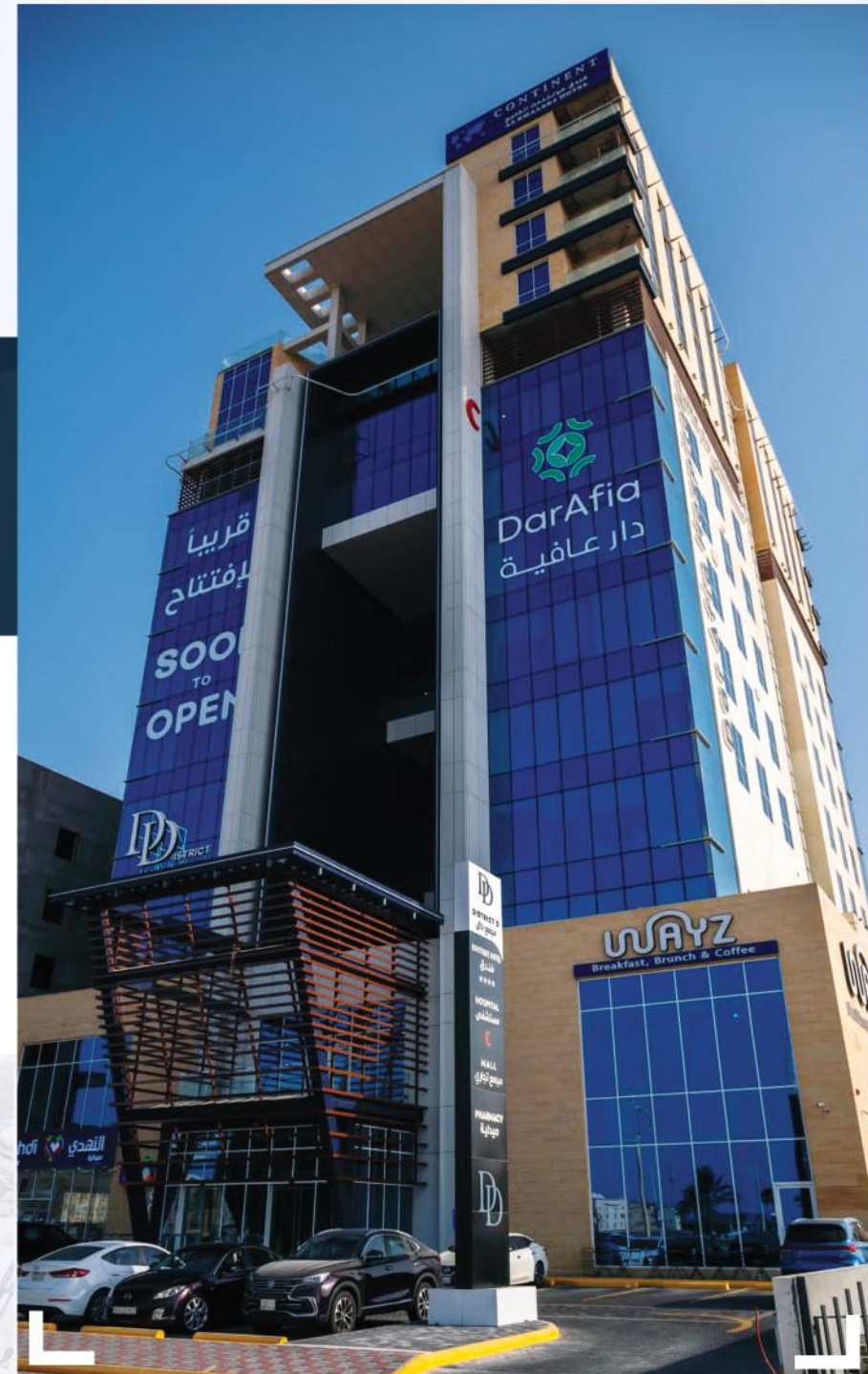
2021/2022



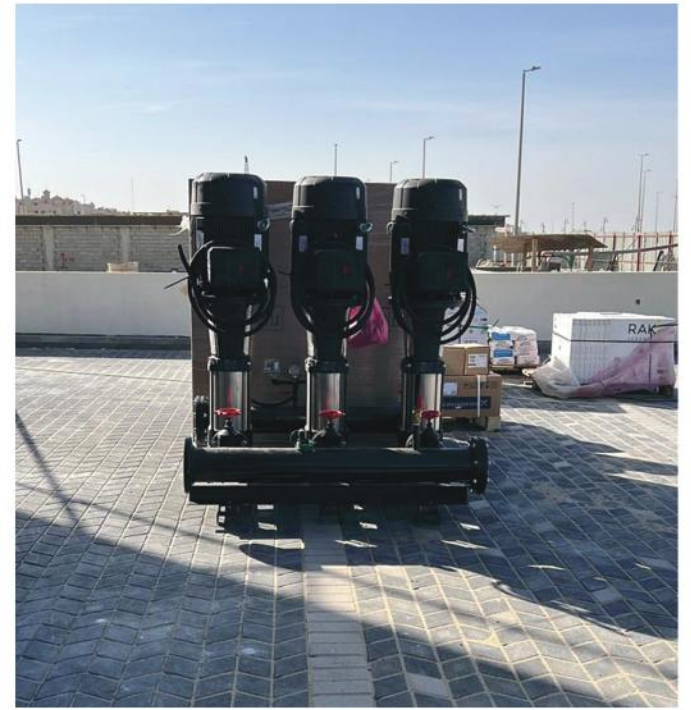
**LOCATION:** AL DAMMAM, KSA

**CATEGORY:** ELCTROMECHANICAL

Install transformers & R.M.U for all electrical systems,  
( Lighting - Power - Earthing - Low Current Systems )











**MAI AL JABER CENTER FOR EARLY  
DETECTION OF CANCER**

2015/2016



**LOCATION: AL DAMMAM, KSA**

**CATEGORY: ELECTROMECHANICAL**

Civil , finishing and electromechanical work:

- All medical system
- Connection MDB & Panel Board
- Skiltron and steel structure work
- Smart System











## SINJAR IRAQ RESTAURANT

2022/2023



**LOCATION:** AL KHOBAR, KSA

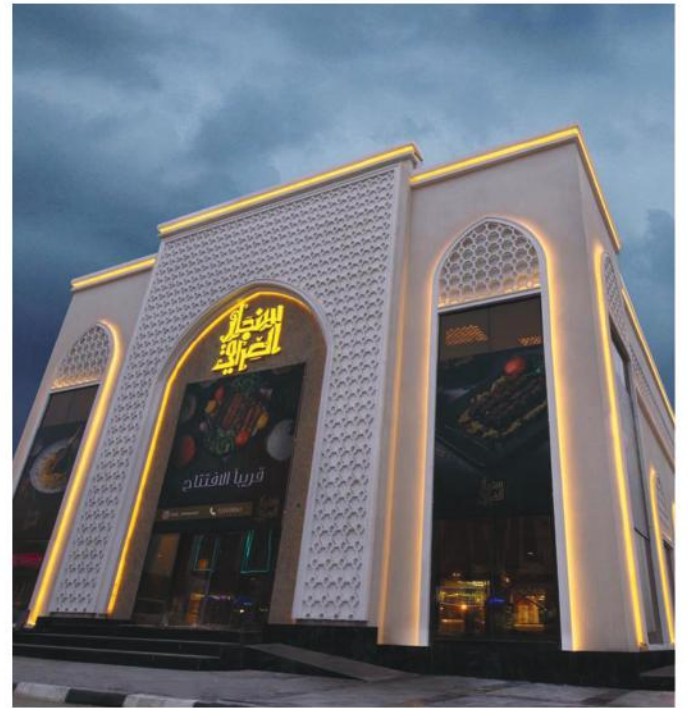
**CATEGORY:** ELCTROMECHANICAL

Finishing and electromechanical work:

- Steel structure work
- Connection MDB & Panel Board
- Decorative Wooden
- Some special equipment for resturant











**GCC**

**GULF DEVELOPMENT**  
CONSTRUCTION CORPORATION



**GET IN TOUCH**

 **+966 56 027 4172**  
**013 82 11 753**

 **Info@gdccest.com**

 **7158, king abdulaziz, madinat  
al ummal dist, Al Khobar, KSA**

[www.GDCCEST.com](http://www.GDCCEST.com)

